

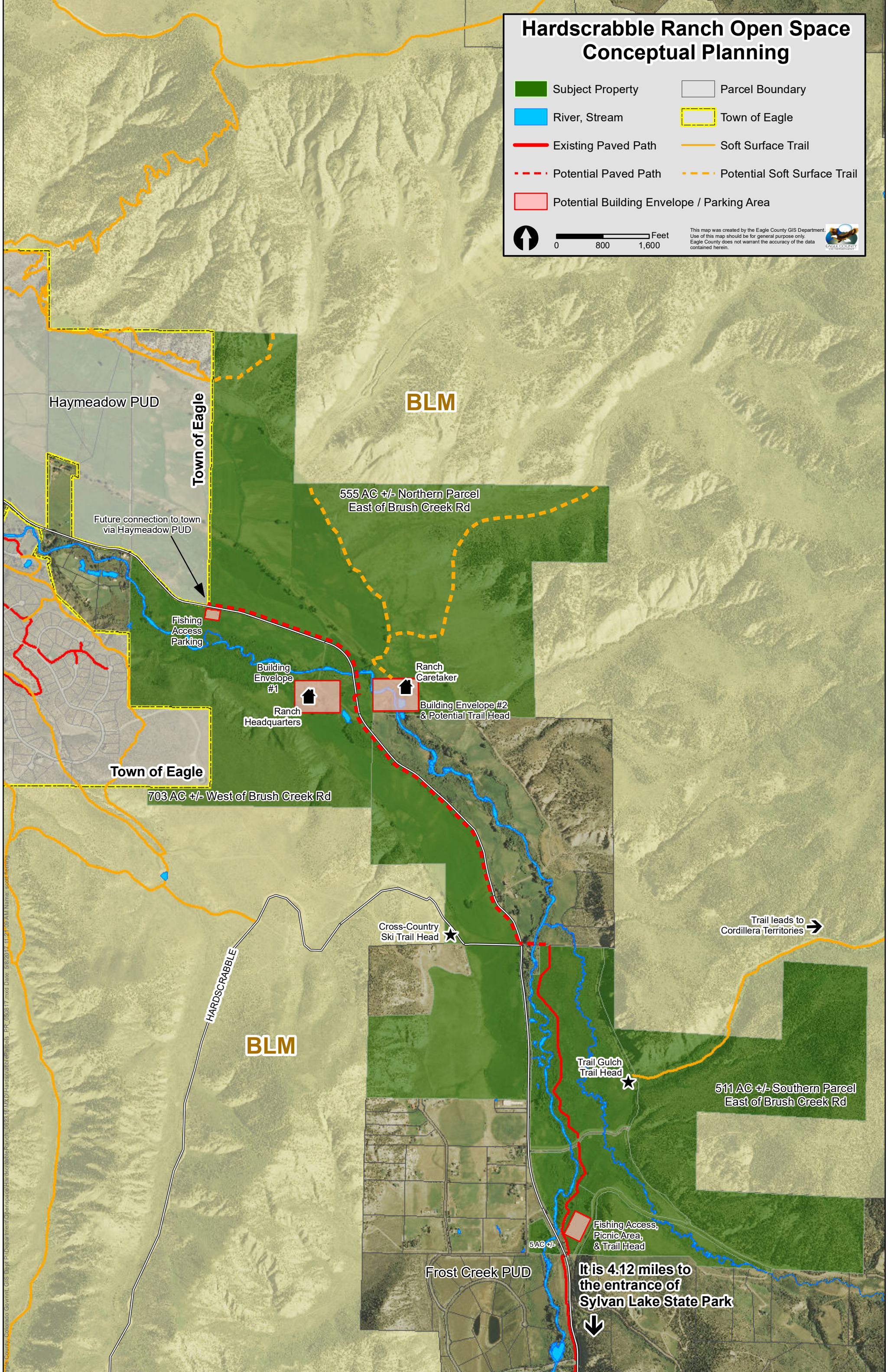
Hardscrabble Ranch Open Space Conceptual Planning

- Subject Property
- Parcel Boundary
- River, Stream
- Town of Eagle
- Existing Paved Path
- Soft Surface Trail
- Potential Paved Path
- Potential Soft Surface Trail
- Potential Building Envelope / Parking Area



0 800 1,600 Feet

This map was created by the Eagle County GIS Department. Use of this map should be for general purpose only. Eagle County does not warrant the accuracy of the data contained herein.



Eagle County, Colorado Government, GIS Dept. P:\Department\OpenSpace\Hardscrabble\Parcels_PR_050817.mxd Date: 5/8/2017 11:24:05 AM Name: scott.kenny